

---

## JLG 2030ES

---

Artikelnummer	14396
Merk	JLG
Model	2030ES
Mast	810
Bouwjaar	2008
Draaiuren	562
Aandrijving	Electric
Draagvermogen	363 Kg
Details	platform height 6100mm

---

Bel, mail of app ons!

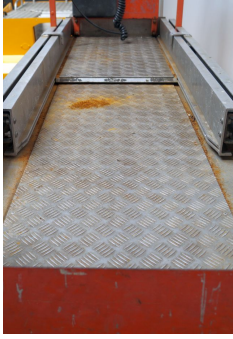
---

+31 (0)418 684 305

[info@forklifthouse.com](mailto:info@forklifthouse.com)

[WhatsApp ons](#)





JLE

### ES Series

**ELECTRIC SCISSOR LIFTS**

**Specifications**

Model	Capacity (kg)	Platform Size (mm)	Max. Height (mm)	Work Height (mm)	Reach (mm)
ES100	1000	1200 x 1200	11000	9500	1100
ES1500	1500	1200 x 1500	11000	9500	1100
ES2000	2000	1500 x 1500	11000	9500	1100
ES3000	3000	1500 x 2000	11000	9500	1100
ES4000	4000	1800 x 2000	11000	9500	1100

**Options**

- AC Power - 3 phase
- DC Power - 24V, 48V
- 200% Capacity
- 100% Duty Cycle
- Stair Climber
- Hydraulic Hoist
- Emergency Stop
- Emergency Lower
- Emergency Release
- Emergency Stop
- Emergency Lower
- Emergency Release

**Dimensions**

Overall Length: 10000mm  
 Overall Width: 1200mm  
 Overall Height: 11000mm  
 Platform Height: 9500mm